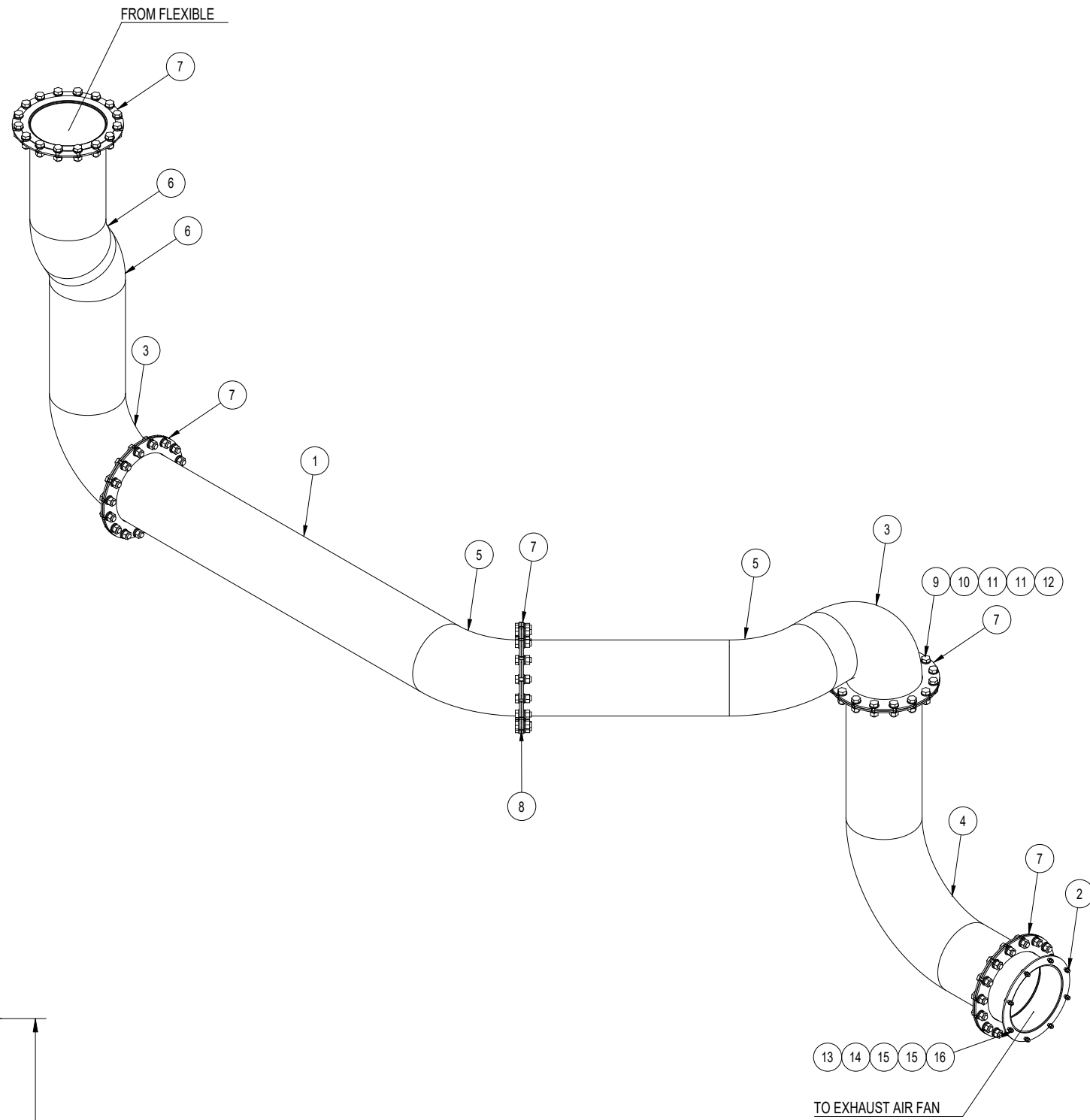


Item	Reference	Description	QTY
1		PIPE DN350 THICKNESS 5mm AISI-316L EN 10217-7 (WELDED)	5,5 m
2		TRANSFORMATION Ø350 - DN350 THICKNESS 5mm AISI-316L	1
3		ELBOW 90° DN350 THICKNESS 5mm SHORT RADIUS 1,5D AISI-316L EN10253-1	2
4		ELBOW 90° DN350 THICKNESS 5m RADIUS 3D AISI-316L EN10253-1	1
5		ELBOW 45° DN350 THICKNESS 5m RADIUS 3D AISI-316L EN10253-1	2
6		ELBOW 30° DN350 THICKNESS 5mm SHORT RADIUS 1,5D AISI-316L EN10253-1	2
7		FLAT FLANGE DN350 PN10 THICKNESS 8mm AISI-316L (INSERTEC FLANGE)	8
8		GASKET DN350 PN10 3mm CERAMIC FIBRE	5
9		BOLT M24x60 A4-80 DIN933	80
10		NUT M24 A4-80 DIN934	80
11		FLAT WASHER M24 A4 DIN125	160
12		GROWER WASHER M24 A4 DIN127	80
13		BOLT M10x40 A4-80 DIN933	8
14		NUT M10 A4-80 DIN934	8
15		FLAT WASHER M10 A4 DIN125	16
16		GROWER WASHER M10 A4 DIN127	8
17		INSULATION TYPE PERSONAL PROTECTION: 50 MM THICKNESS STONE WOOL ACCORDING TO ISOVER TECH WIRED MAT MT 3.1. AND 0.8 MM ALUMINUM CLADDING	9,3 m



Rev.	Modification	Date	Name
This drawing is property of INSERTEC. Must not be copied or transferred to third parties in any way without written authorization.			
Tolerance for dimensions without tol. according to ISO 2768-mK		Date	Name
More than	0.5	3	6
Less	3	6	30
Machine Tool	±0.1	±0.1	±0.2
Welded	±0.5	±1	±1.5
Customer:		Format:	A2
2558-ALINVEST		Scale:	1:25
insertec Furnaces & Refractories		Project Methode:	Part Number
			2558-3322-TMT-ESR16-2
			Revision
			1/1